

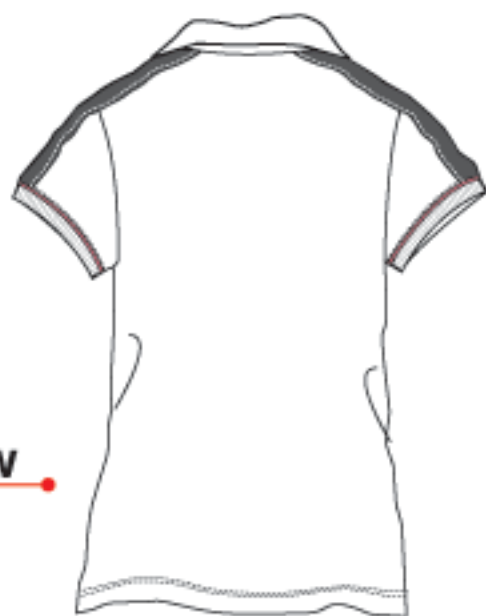
◎ LADIES' CUT & SEWN POLO

- **Cotton Single Jersey**
- **Flat knit collar & cuffs DTM body COL A**
- **Self fabric neck tape & cuff piping in contrast COL B**
- **Self fabric shoulder taping in contrast COL C**

FLAT KNIT COLLAR & CUFFS
DTM BODY COL A



BACK VIEW



SUGGESTED COLORWAYS



WHITE
LIGHT BLUE
DEEP PINK



LIGHT BLUE
WHITE
DEEP PINK



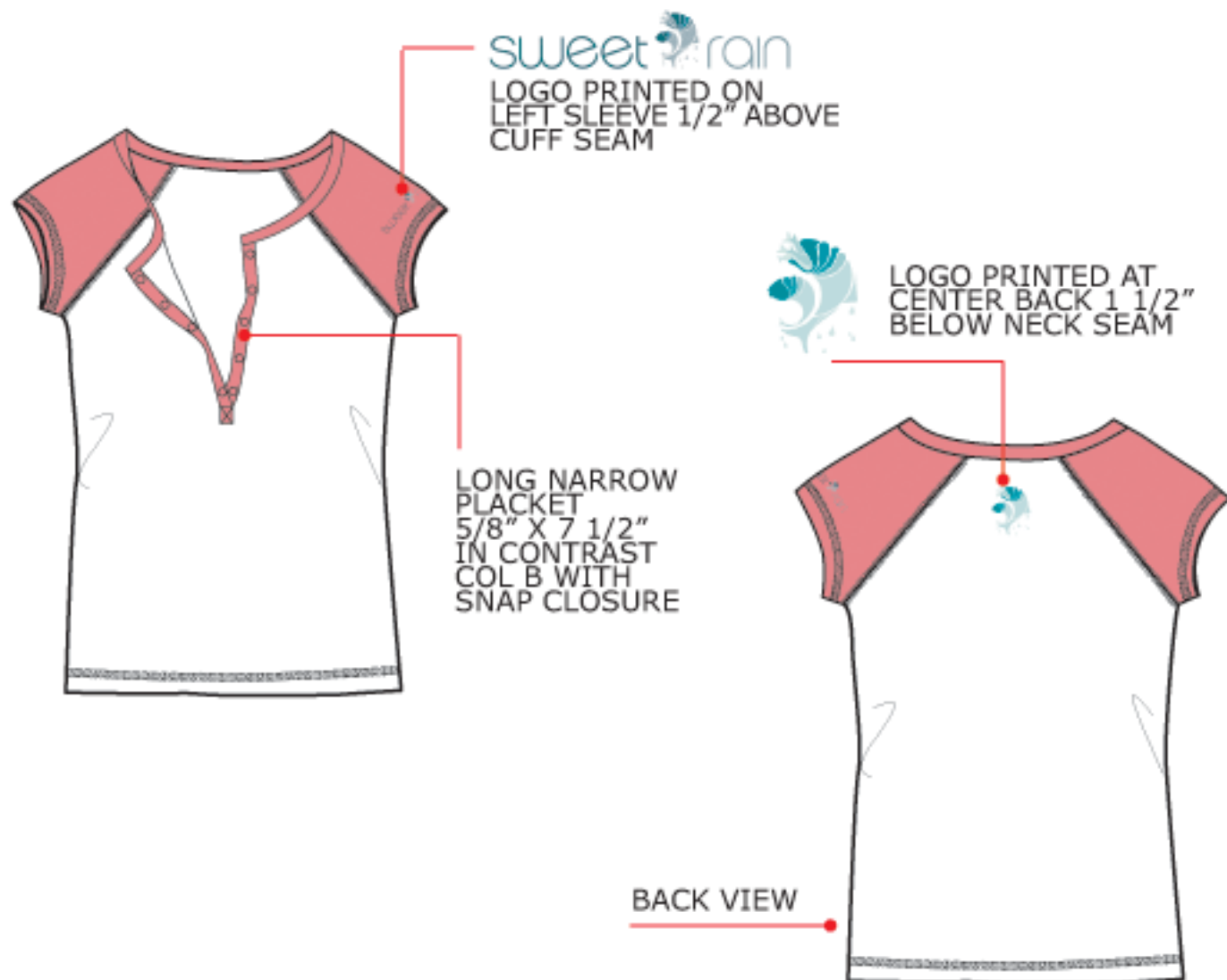
DEEP PINK
LIGHT BLUE
MIDNIGHT BLUE



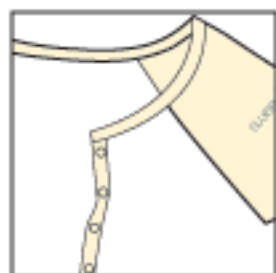
MIDNIGHT BLUE
LIGHT BLUE
DEEP PINK

◎ LADIES' RAGLAN HENLEY TEE

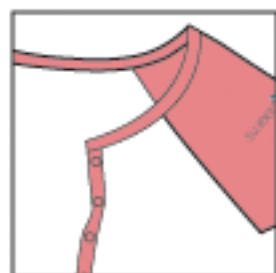
- Cotton Single Jersey
- Cotton 1x1 Rib for neckband
- Raglan sleeves, placket & neckband in contrast COL B
- Snap closure at placket
- "Sweet Rain" text logo printed on left sleeve
- "FISH" icon logo printed at center back below neck seam



SUGGESTED COLORWAYS



LEMON CHIFFON



HOT PINK



CYAN AQUA

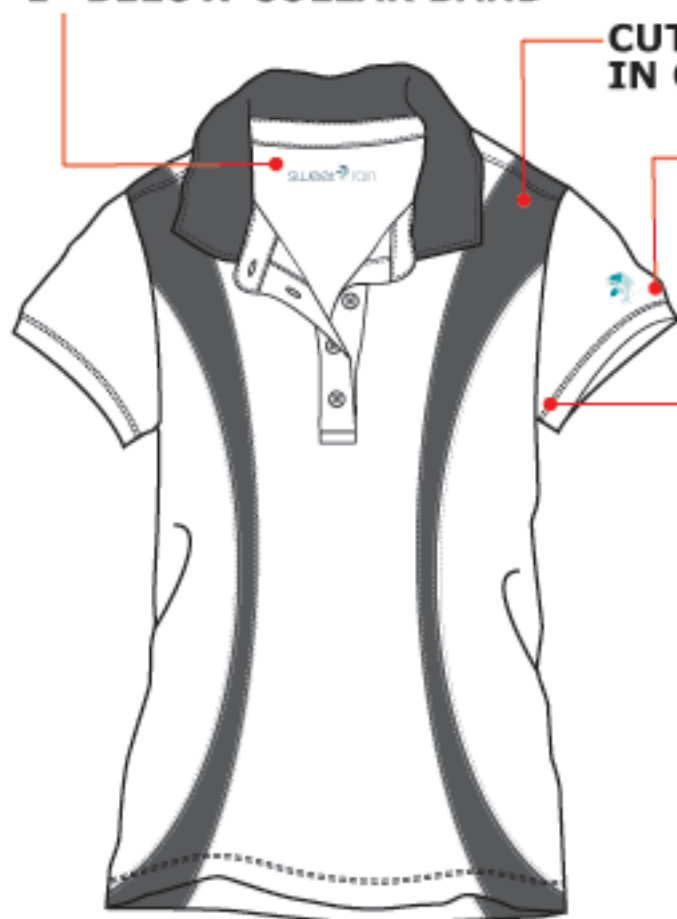


ORANGE RED

◎ LADIES' CUT & SEWN PANEL POLO_2A

- **Cotton Single Jersey**
- **Self fabric collar & cuffs in contrast COL B**
- **Self fabric contour cut & sewn detail in contrast COL B**

**PRINTED COMPANY LOGO
1" BELOW COLLAR BAND**



**CUT & SEWN CONTOUR PANEL DETAIL
IN CONTRAST COL B**

**COMPANY LOGO
1/2" FROM CUFF SEAM**

**1/8" DOUBLE TOPSTITCHING
CUFF SEAM 5/8" ABOVE
SLEEVE EDGE**



BACK VIEW

SUGGESTED COLORWAYS



WHITE
LIGHT STEEL BLUE



LIGHT STEEL BLUE
WHITE



LIGHT PINK
WHITE

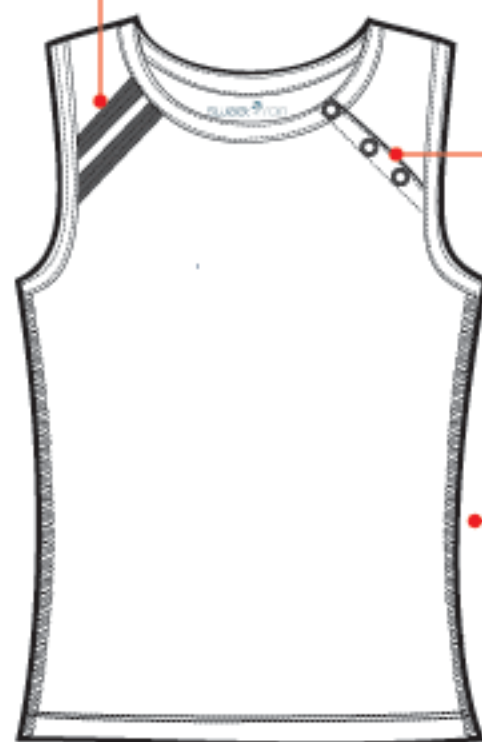
○ LADIES' MUSCLE TEE

- Cotton Single Jersey OR Cotton Lycra Jersey
- Self fabric double stripes taping in contrast COL B

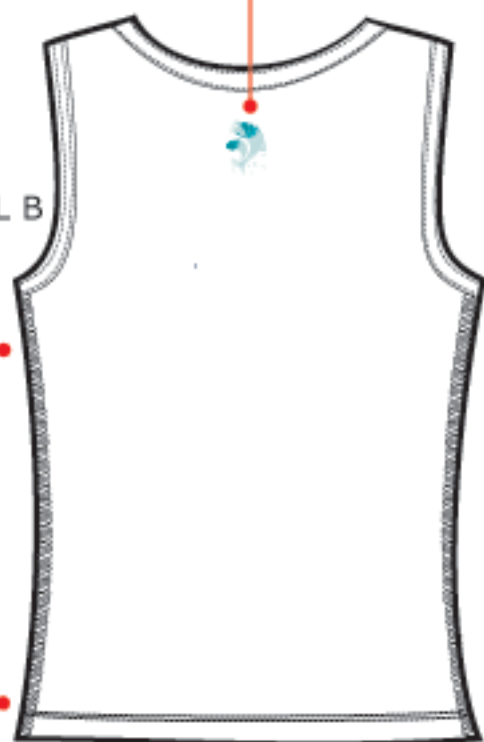
DOUBLE STRIPES TAPING
IN CONTRAST COL B
1/2" WIDE EACH STRIPE

PERFESS STUDS OPENING
IN CONTRAST COL B

"FISH" ICON PRINTED AT BACK
1 1/2" BELOW NECK SEAM



OVERDGING
AT SIDE SEAMS
IN CONTRAST COL B

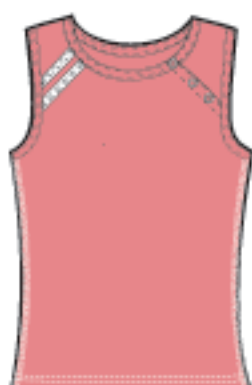


BACK VIEW

SUGGESTED COLORWAYS



WHITE
HOTPINK



HOTPINK
WHITE



BLACK
DEEP SKY BLUE



DEEP SKY BLUE
WHITE

◎ LADIES' CUT & SEWN PANEL POLO_2B

- **Dry Tech 55% Cotton 45% Polyester**
- **Self fabric collar & cuffs in contrast COL B**
- **Self fabric contour cut & sewn detail in contrast COL B**
- **Printed "sweet rain" text logo on left sleeve**
- **Flag label "fish" icon sewn along left side seam**

1/4" SINGLE TOPSTITCHING
ON SELF FABRIC COLLAR

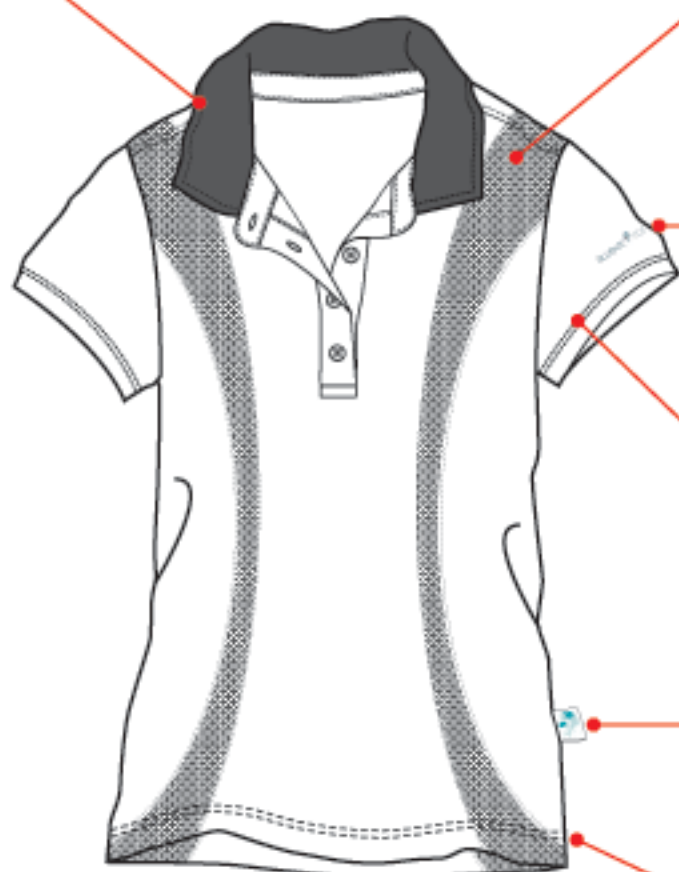
CONTOUR PANEL
CUT & SEWN DETAIL
IN REVERSE SELF FABRIC
IN CONTRAST COLOR B

"SWEET RAIN" TEXT LOGO
PRINTED ON LEFT SLEEVE
1" ABOVE CUFF SEAM

1/4" DOUBLE TOPSTITCHING
CUFF SEAM

"FISH" ICON LOGO FLAG
LABEL SEWN ON LEFT
SIDE SEAM 4" ABOVE HEM

1/4" DOUBLE TOPSTITCHING
HEM SEAM



SUGGESTED COLORWAYS



WHITE
LIGHT STEEL BLUE



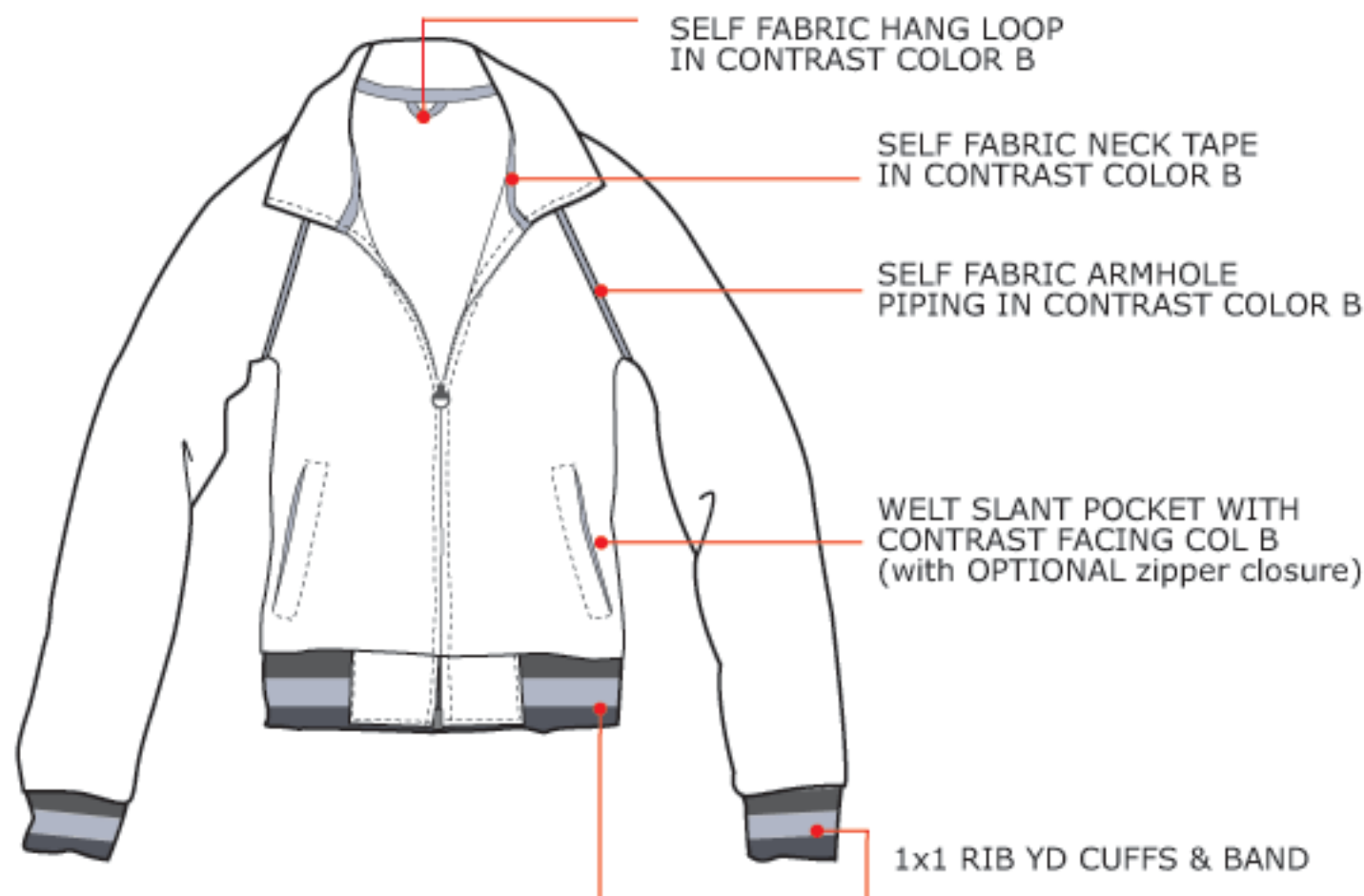
LIGHT STEEL BLUE
WHITE



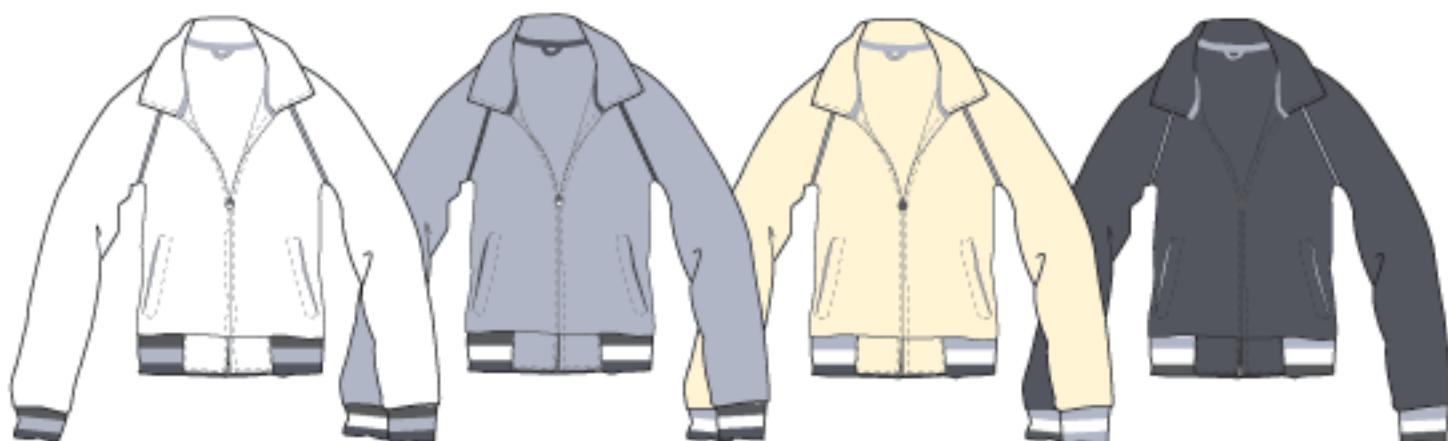
LIGHT PINK
WHITE

○ LADIES' SPORT JACKET

- Cotton French Terry
- Self fabric neck tape, hang loop, armhole piping & pocket facing in contrast COL B
- 1x1 YD Rib for cuffs & band



SUGGESTED COLORWAYS



WHITE
LIGHT STEEL BLUE
EBONY or CHARCOAL
DK NAVY

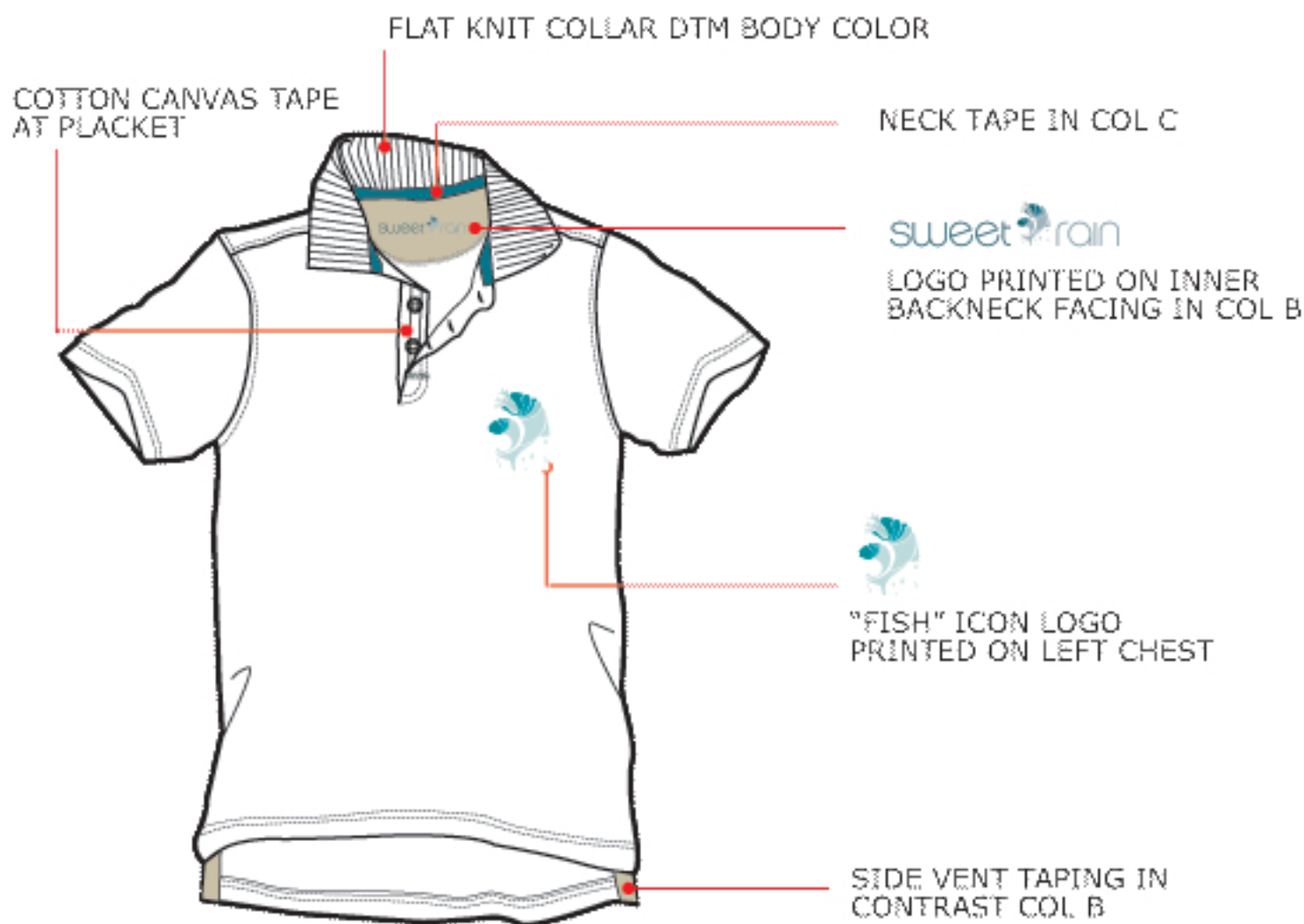
LT STEEL BLUE
WHITE
EBONY or CHARCOAL
DK NAVY

LEMON CHIFFON
LT STEEL BLUE
WHITE
DK NAVY

DK NAVY
LT STEEL BLUE
WHITE
EBONY or CHARCOAL

◎ UNISEX PLAIN POLO

- Cotton Pique OR Cotton Single Jersey
- Flat knit collar DTM body COL A
- Self fabric neck tape in contrast COL B
- Self fabric half moon back neck lining in contrast COL C OPTIONAL
- Cotton Canvas Trim at placket in DTM COL C

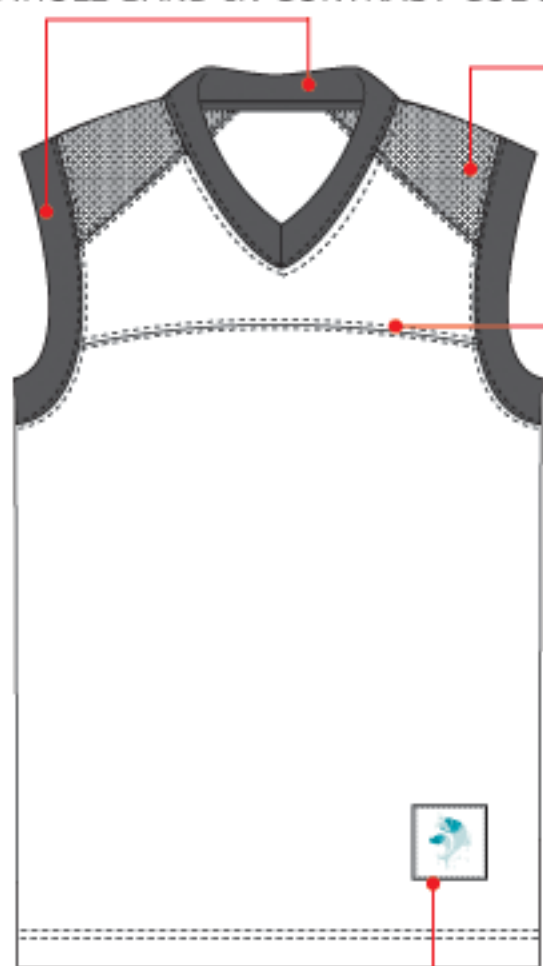


- COLORS VARY AS PER CUSTOMER'S PREFERENCE

◎ MEN'S MUSCLE SPORT TANK

- Dry Tech 55% Cotton 45% Polyester
- Self fabric neckband & armhole band in contrast COL B
- Horizontal cut & sewn detail at chest & shoulder
- Woven patch label with "FISH" icon sewn above
- hem, left side front panel
- "Sweet Rain" text logo printed at center back below neck seam

SELF FABRIC NECKBAND &
ARMHOLE BAND IN CONTRAST COL B



SELF FABRIC SHOULDER CUT & SEWN
DETAIL IN REVERSE SELF FABRIC IN
CONTRAST COL B

HORIZONTAL CUT & SEWN
DETAIL AT CHEST

sweet rain
PRINTED ON CENTER BACK
1 1/2" BELOW
NECK SEAM



WOVEN PATCH LABEL
WITH "FISH" LOGO PRINT

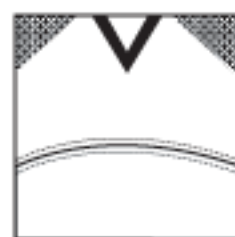
SUGGESTED COLORWAYS :



WHITE
DK NAVY



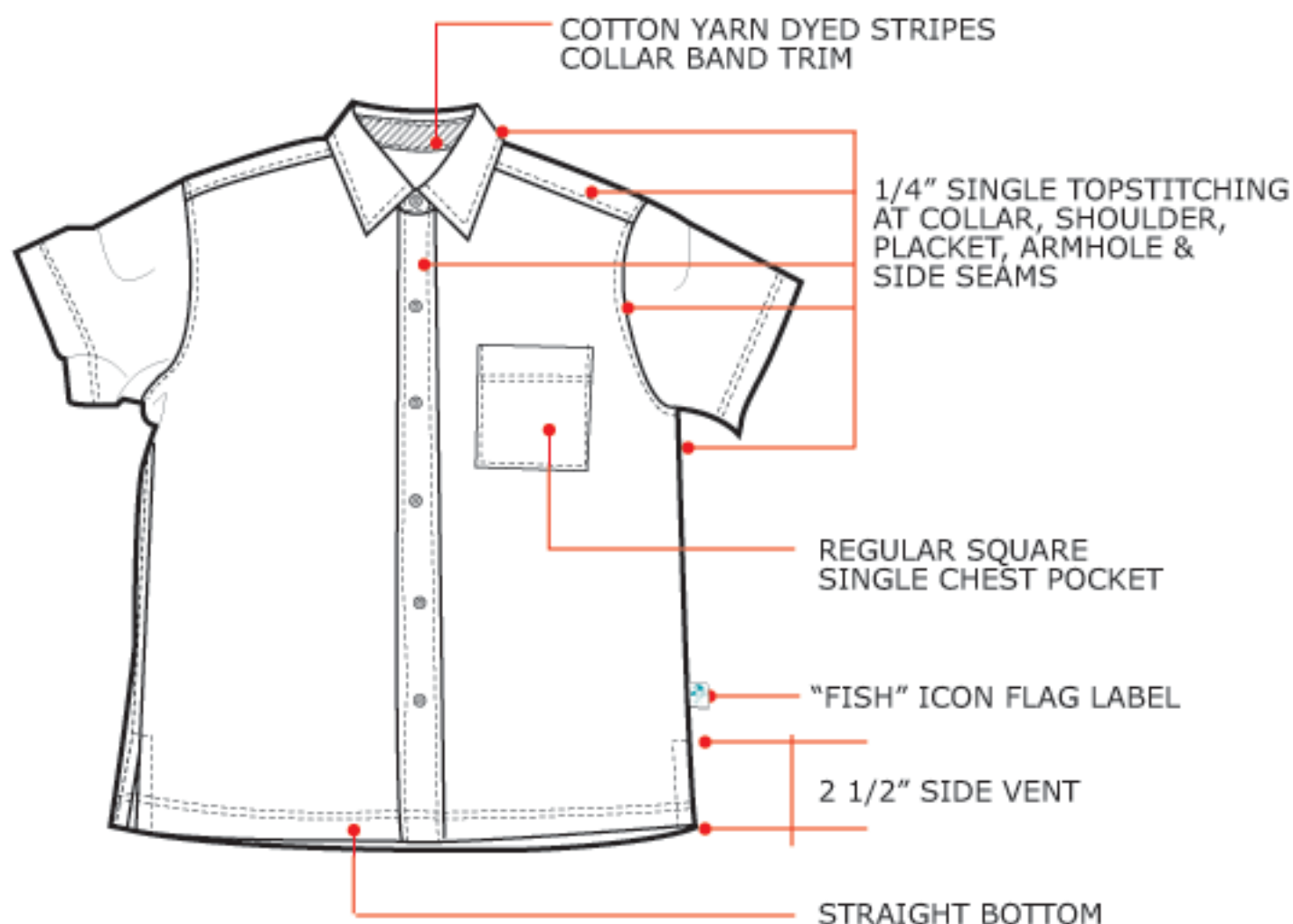
WHITE
TEAL



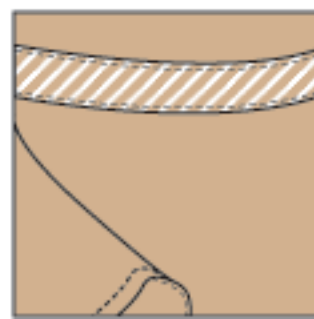
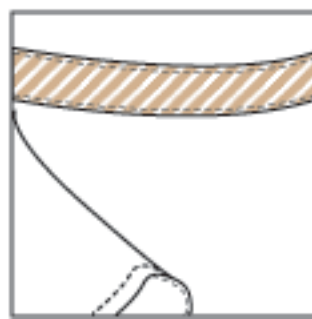
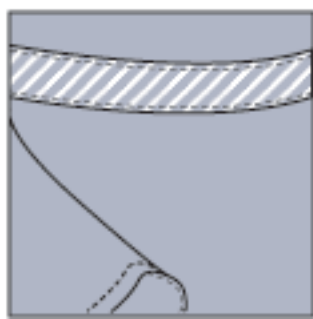
WHITE
BLACK

◎ MEN'S STRAIGHT BOTTOM S/S SHIRT

- **Cotton Twill OR Poplin**
- **Cotton Yarn Dyed Stripe collar band trim**
- **"FISH" icon flag label sewn at left side seam**



SUGGESTED COLORWAYS



◎ MEN'S SLIM FIT V-POLO

Cotton Pique

Flat knit collar & cuffs DTM body COL A

Self fabric neck tape & cuff piping in contrast COL B

Self fabric shoulder taping in contrast COL C

ARMHOLE CUT & SEWN DETAIL
FRONT & BACK PANEL IN
CONTRAST COL B

NECK TAPE IN
CONTRAST COL B

SHORT V PLACKET WITH
COTTON HERRINGBONE
TAPE IN CONTRAST COL B

BODY & SLEEVES
IN SOLID COL A

"FISH" ICON LOGO
FLAG LABEL SEWN
AT LEFT SIDE SEAM
1 1/2" ABOVE SIDE VENT

SIDE VENT
TAPE IN
CONTRAST
COL B

2" FRONT
SIDE VENT

3" BACK
SIDE VENT

SUGGESTED COLORWAYS



DEEP SKY BLUE
DK SLATE GRAY



ORANGE RED
DK SLATE GRAY



DK SLATE GRAY
DEEP SKY BLUE



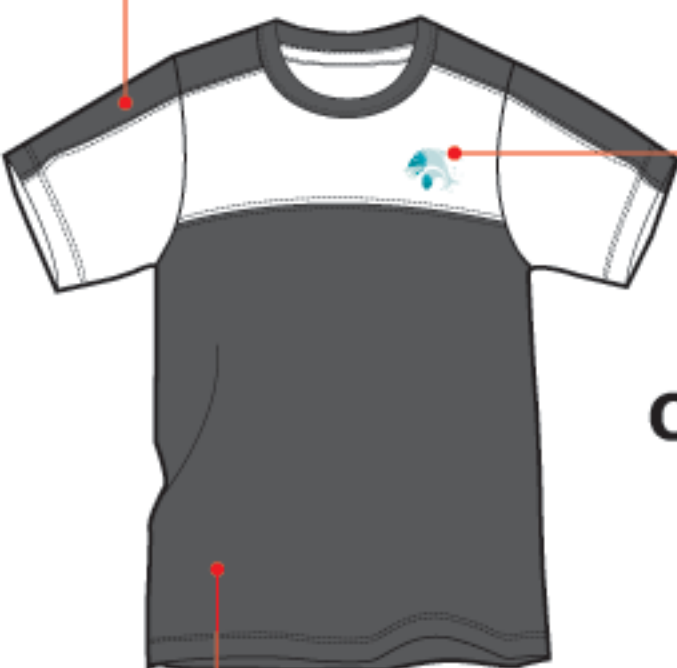
WHITE
ORANGE RED

◎ MEN'S CUT & SEWN SPORT TEE

- Cotton Single Jersey
- Self fabric neckband in contrast COL B
- Horizontal cut & sewn detail at chest
- Sweet Rain "Fish" icon printed logo on left chest

OPTION A

SHOULDER CUT & SEWN TAPING
IN CONTRAST COL B



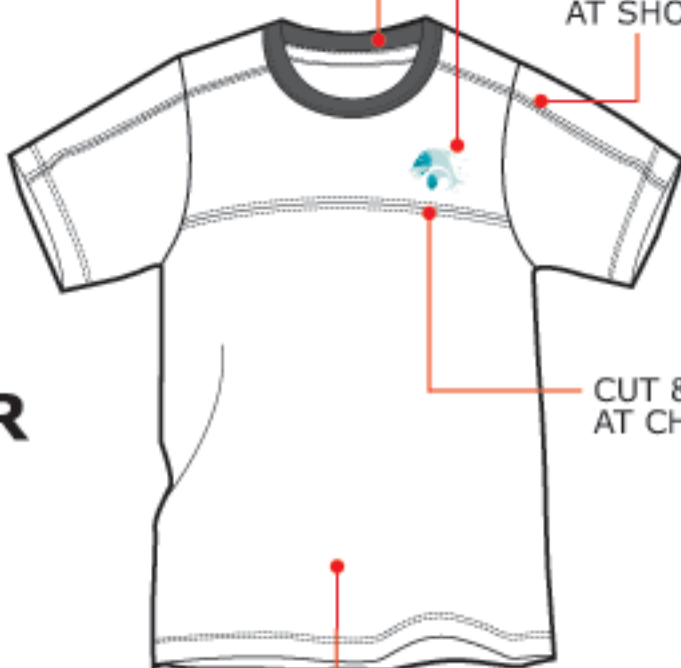
LOWER BODY IN CONTRAST COL B

OR

OPTION B

"FISH" ICON PRINTED ON LEFT CHEST

NECKBAND IN
CONTRAST COL B



CUT & SEWN
AT SHOULDER

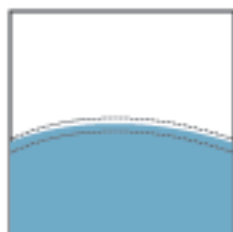
CUT & SEWN
AT CHEST

BODY IN SOLID COL A

SUGGESTED COLORWAYS :



WHITE
EBONY or CHARCOAL



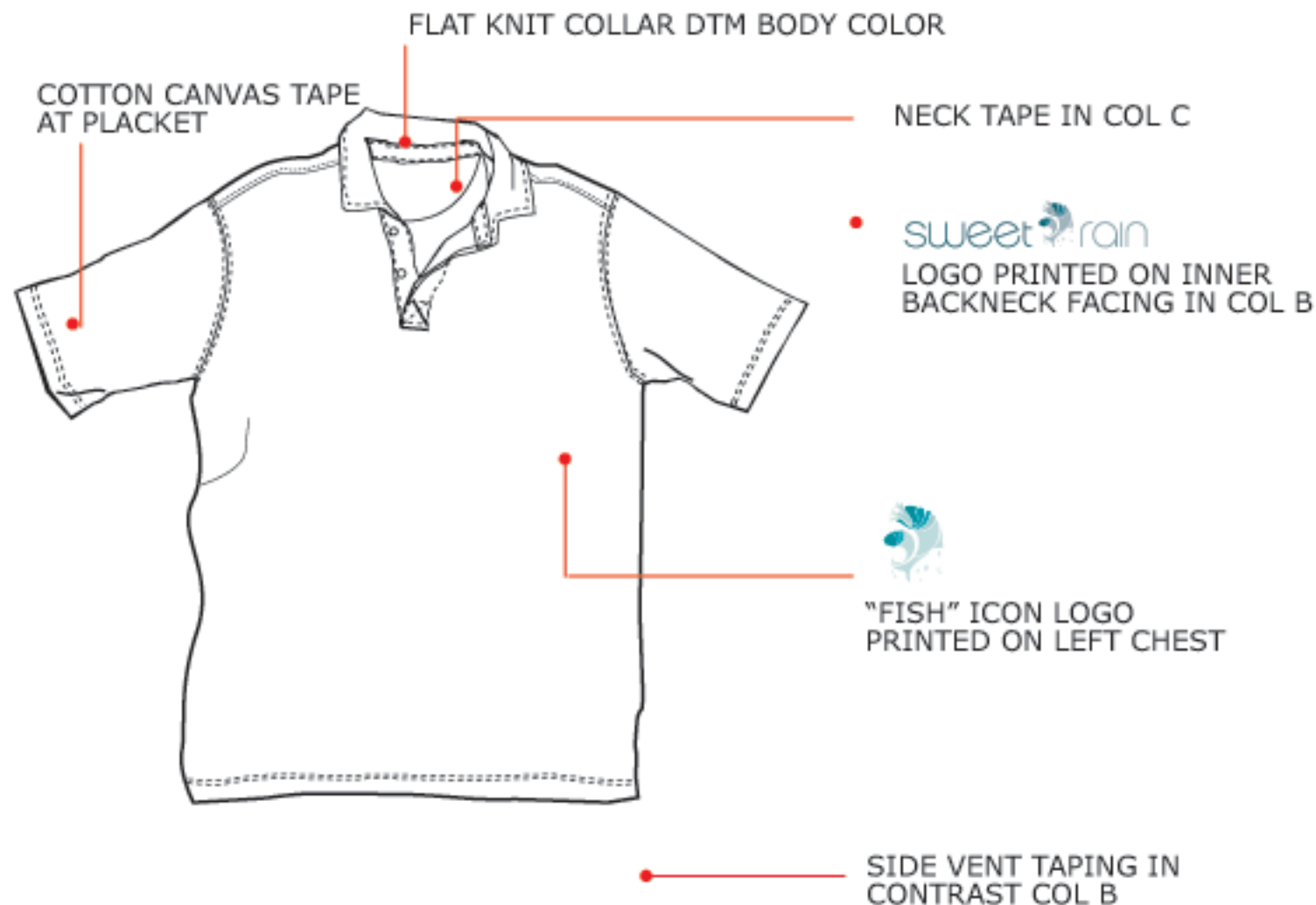
WHITE
CYAN AQUA



WHITE
MIDNIGHT BLUE OR NAVY

◎ MEN'S REGULAR FIT RUGBY POLO

- Cotton Single Jersey
- Woven Cotton collar & inner placket in white
-
- COL C OPTIONAL
Cotton Canvas Trim at placket in DTM COL C
-



- COLORS VARY AS PER CUSTOMER'S PREFERENCE

○ MEN'S SPORT JACKET

- Cotton French Terry
- Cotton Flat Knit YD Striped Collar
- 1x1 Rib Solid Cuffs & Hem Band
- "SWEET RAIN" text & icon logo printed on front kangaroo pocket 1/2" above hemband seam

1/2" WIDE TAPING
ON HOOD WITH
2" INTERVAL



FLAT KNIT YD COLLAR

SELF FABRIC
DOUBLE STRIPES
TAPING ALONG SLEEVES
IN CONTRAST COLORS

sweet rain
PRINTED ON POCKET
1/2" ABOVE HEMBAND

SUGGESTED COLORWAYS



EBONY or CHARCOAL
DARK SLATE GRAY
ORANGE RED



BEIGE
ORANGE RED
EBONY or CHARCOAL

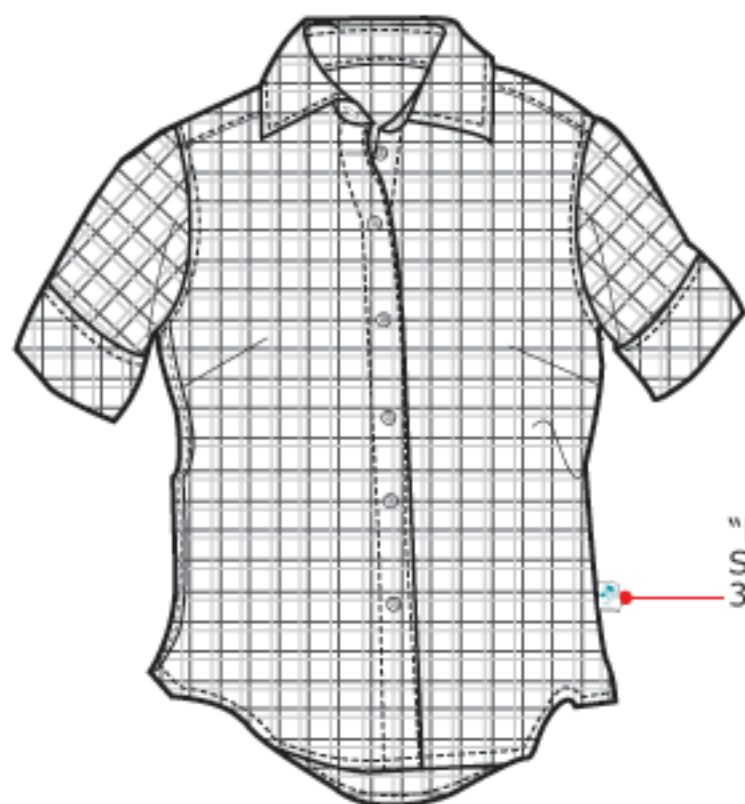


DK SLATE GRAY
EBONY or CHARCOAL
ORANGE RED

SRLS_0001

◎ LADIES' S/S CHECKS SHIRT

- Cotton Poplin YD Checks (with OR w/o Lycra)
- "FISH" icon flag label sewn at left side seam



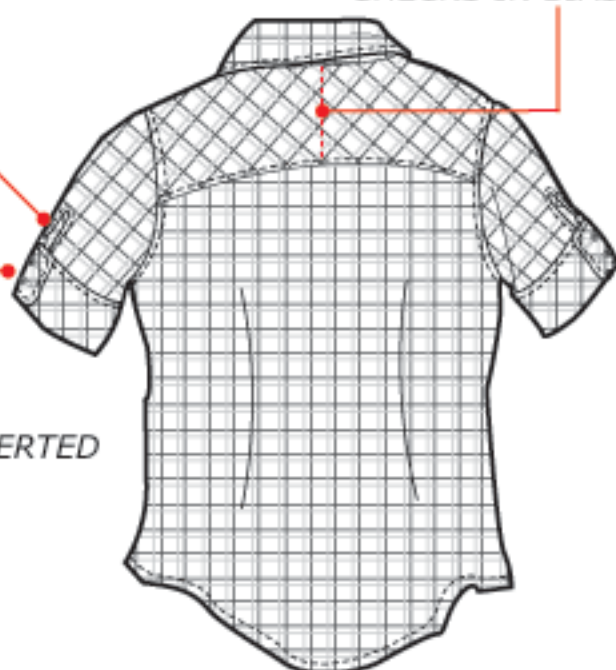
"FISH" ICON FLAG LABEL
SEWN AT SIDE SEAM
3" ABOVE HEM

4" SHOULDER YOKE
CHECKS IN BIAS CUT

1 3/4" CUFF SLIT

2" CUFF HEIGHT W/
DOUBLE BUTTON OPENING
CHECKS IN BIAS CUT

** OPTIONAL: MAY BE CONVERTED
TO CAPPED SLEEVES*



COLORS DEPEND ON AVAILABILTY OF MATERIAL

